

## *OUTDOOR EQUIPMENT*

---

*Group*  
**ROTTE**  
**2017/1**

1	2	3	4	5	6
---	---	---	---	---	---



## PLANNING, MANUFACTURING AND INSTALLATION OF OUTDOOR FURNITURE.

Planning, manufacturing and installation of outdoor furniture.

Our designer team assists your ideas with creative solutions. Aesthetic and highly mobile equipment made of excellent quality material. Our experienced fitter-team ensures professional onsite installation.

With their classical appearance, our shopping cart bays offer a perfect solution for the organised and safe storage of shopping carts. Placing of advertising boards is possible, even subsequently.

Smoking pavilions offer an alternative for creating smoke-free indoor areas.

Our bus stops provide a versatile solution to meet individual needs, adapting to special local conditions. They can have one or two entrances. Two entrances are possible if installed on a traffic island.

With the supplementary products we can create an organised environment.

### REFERENCES

AUCHAN | ARTIMA | BRICOLAGE | BRICOSTORE |  
CARREFOUR | CBA | CORA | DECATHLON | INTEREX  
| INTERMARCHE | OBI | PRAKTIKER | PROFI | SPAR |  
TESCO

*TROLLEY SHELTER*

*BUS STOP*

*BICYCLE RACK*

*SMOKING PAVILION*



# GALLERY

## TROLLEY SHELTER WITH PITCHED ROOF



The framework structure of the standard trolley shelter is made of 80 x 80 mm hot dep galvanized steel hollow sections. It has a levelling base structure to eliminate ground unevenness. Its area is adjusted to the standard parking lot size (4.77 x 2.3 x 2.7 m). Its 3-row capacity is subject to the trolley type. It is 3 x 18 = 54 pcs. for 125 L shopping trolleys and 3 x 15 = 45 pcs. for 210 L shopping trolleys. The roof structure has a triangular shape and is covered with 10 mm thick UV-protection air hamber polycarbonate sheets. The standard features include inside impact protection and the trolley rail.

Installation of a double shelter with a shared row of columns instead of two separate trolley shelters could be a cost-effective solution for the storage of a larger number of shopping trolleys. Its capacity in the

2 x 3 rows is subject to the trolley type. It is 2 x 3 x 18 = 108 pcs. for 125 L shopping trolleys and 2 x 3 x 15 = 90 pcs. for 210 L shopping trolleys.

Further options: lightweight (60 x 60) framework structure. Reinforced framework structure (100 x 100 or 120 x 120) for extreme weather. It is possible to cover the side walls or the starting side with 6 mm tempered glass sheets or air chamber polycarbonate boards, even at a later stage. The front roof board can be used for decoration or information. With surface powder coating in RAL colours, one can create an image matching the environment. Outer impact protection against damage.





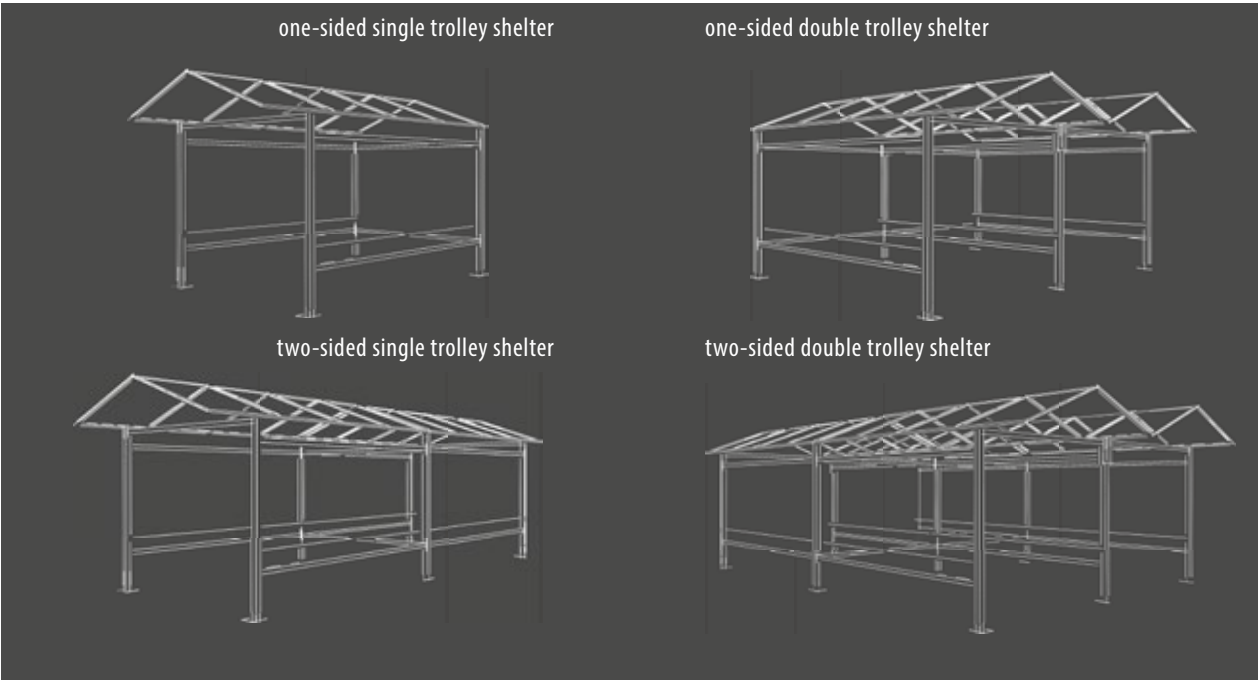
SINGLE TROLLEY SHELTER WITH PITCHED ROOF



code number	support structure 80x80 mm	type		surface		trolley guiding rail	inner impact protection	side wall		outer impact protection
		one-sided single	two-sided single	fire-galvanisation	6 basic RAL colours available			6 mm tempered glass	polycarbonate	
10.01.472327.81	✓	✓	—	✓	—	✓	✓	*	*	*
10.01.472327.98	✓	✓	—	✓	✓	✓	✓	*	*	*
10.02.472327.81	✓	—	✓	✓	—	✓	✓	*	*	*
10.02.472327.98	✓	—	✓	✓	✓	✓	✓	*	*	*

\* Options

<b>1021</b> Kode (98) Yellow	
<b>3020</b> Kode (98) Traffic red	
<b>7016</b> Kode (98) Anthracite grey	
<b>2004</b> Kode (98) Pure orange	
<b>5010</b> Kode (98) Gentian blue	
<b>9007</b> Kode (98) Grey aluminium	



sheeted roof front\*



Film-decorated, inscribed roof front\*  
In custom colour, if required.\*

Anchoring technique: to concrete, viacolor, bitumen or concrete blocks.



outer impact protection\*



Trolley guiding rail.  
In custom colour, if required.\*  
Anchoring technique: to concrete, viacolor, bitumen or concrete blocks.

<b>1021</b> Kode (98) Yellow	
<b>3020</b> Kode (98) Traffic red	
<b>7016</b> Kode (98) Anthracite grey	
<b>2004</b> Kode (98) Pure orange	
<b>5010</b> Kode (98) Gentian blue	
<b>9007</b> Kode (98) Grey aluminium	

DOUBLE TROLLEY SHELTER WITH PITCHED ROOF



code number	support structure 80x80 mm	type		surface		trolley guiding rail	inner impact protection	side wall		outer impact protection
		one-sided double	two-sided double	fire-galvanisation	6 basic RAL colours available			6 mm tempered glass	polycarbonate	
10.03.472327.81	✓	✓	—	✓	—	✓	✓	*	*	*
10.03.472327.98	✓	✓	—	✓	✓	✓	✓	*	*	*
10.04.472327.81	✓	—	✓	✓	—	✓	✓	*	*	*
10.04.472327.98	✓	—	✓	✓	✓	✓	✓	*	*	*

\* Options



# GALLERY

## TROLLEY SHELTER WITH CURVED ROOF



The framework structure of the standard trolley shelter is made of 80 x 80 mm hot dep galvanized steel hollow sections. It has a levelling base structure to eliminate ground unevenness. Its area is adjusted to the standard parking lot size (4.77 x 2.3 x 2.7 m). Its 3-row capacity is subject to the trolley type. It is 3 x 18 = 54 pcs. for 125 L shopping trolleys and 3 x 15 = 45 pcs. for 210 L shopping trolleys. The roof structure has a curved shape and is covered with 10 mm thick UV-protection air hamber polycarbonate sheets. The standard features include inside impact protection and the trolley rail.

Installation of a double shelter with a shared row of columns instead of two separate trolley shelters could be a cost-effective solution for the storage of a larger number of shopping trolleys. Its capacity in

the 2 x 3 rows is subject to the trolley type. It is 2 x 3 x 18 = 108 pcs. for 125 L shopping trolleys and 2 x 3 x 15 = 90 pcs. for 210 L shopping trolleys.

Further options: lightweight (60 x 60) framework structure. Reinforced framework structure (100 x 100 or 120 x 120) for extreme weather. It is possible to cover the side walls or the starting side with 6 mm tempered glass sheets or air chamber polycarbonate boards, even at a later stage. The front roof board can be used for decoration or information. With surface powder coating in RAL colours, one can create an image matching the environment. Outer impact protection against damage.





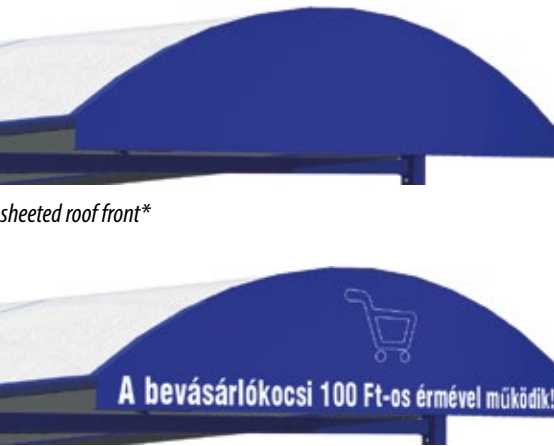
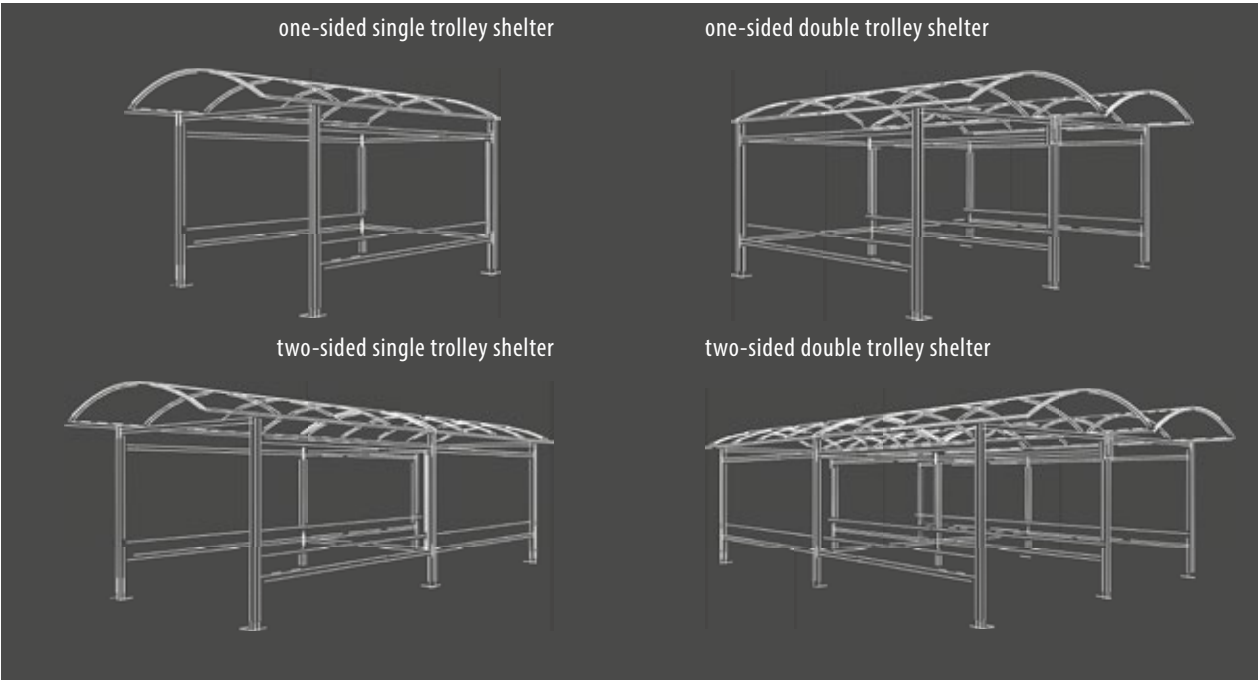
SINGLE TROLLEY SHELTER WITH CURVED ROOF



code number	support structure 80x80 mm	type		surface		trolley guiding rail	inner impact protection	side wall		outer impact protection
		one-sided single	two-sided single	fire-galvanisation	6 basic RAL colours available			6 mm tempered glass	polycarbonate	
10.05.472327.81	✓	✓	—	✓	—	✓	✓	*	*	*
10.05.472327.98	✓	✓	—	✓	✓	✓	✓	*	*	*
10.06.472327.81	✓	—	✓	✓	—	✓	✓	*	*	*
10.06.472327.98	✓	—	✓	✓	✓	✓	✓	*	*	*

\* Options

<b>1021</b> Kode (98) Yellow	
<b>3020</b> Kode (98) Traffic red	
<b>7016</b> Kode (98) Anthracite grey	
<b>2004</b> Kode (98) Pure orange	
<b>5010</b> Kode (98) Gentian blue	
<b>9007</b> Kode (98) Grey aluminium	



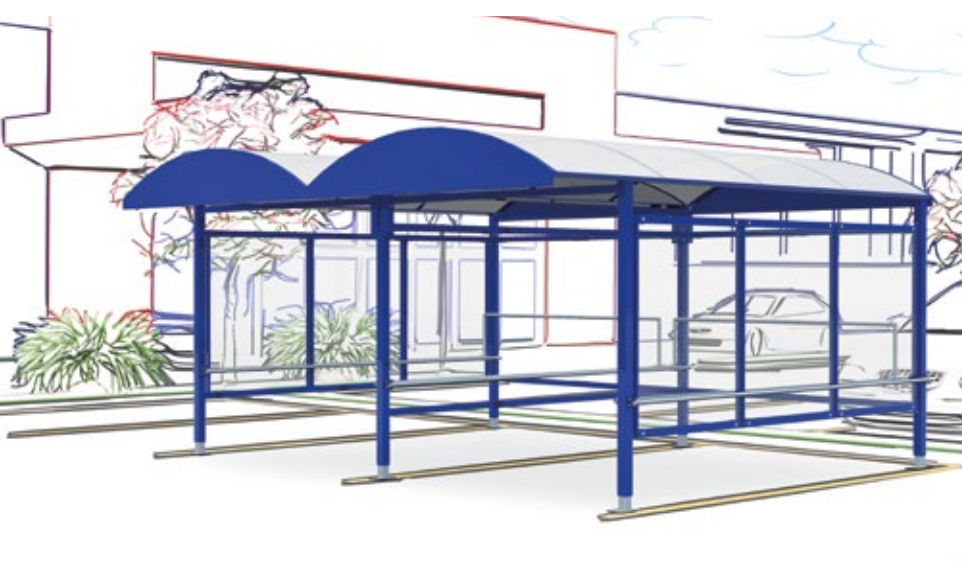
sheeted roof front\*  
  
film-decorated, inscribed roof front\*  
In custom colour, if required.\*  
Anchoring technique: to concrete, viacolor, bitumen or concrete blocks.



outer impact protection\*  
  
trolley guiding rail.  
In custom colour, if required.\*  
Anchoring technique: to concrete, viacolor, bitumen or concrete blocks.

<b>1021</b> Kode (98) Yellow	
<b>3020</b> Kode (98) Traffic red	
<b>7016</b> Kode (98) Anthracite grey	
<b>2004</b> Kode (98) Pure orange	
<b>5010</b> Kode (98) Gentian blue	
<b>9007</b> Kode (98) Grey aluminium	

DOUBLE TROLLEY SHELTER WITH CURVED ROOF



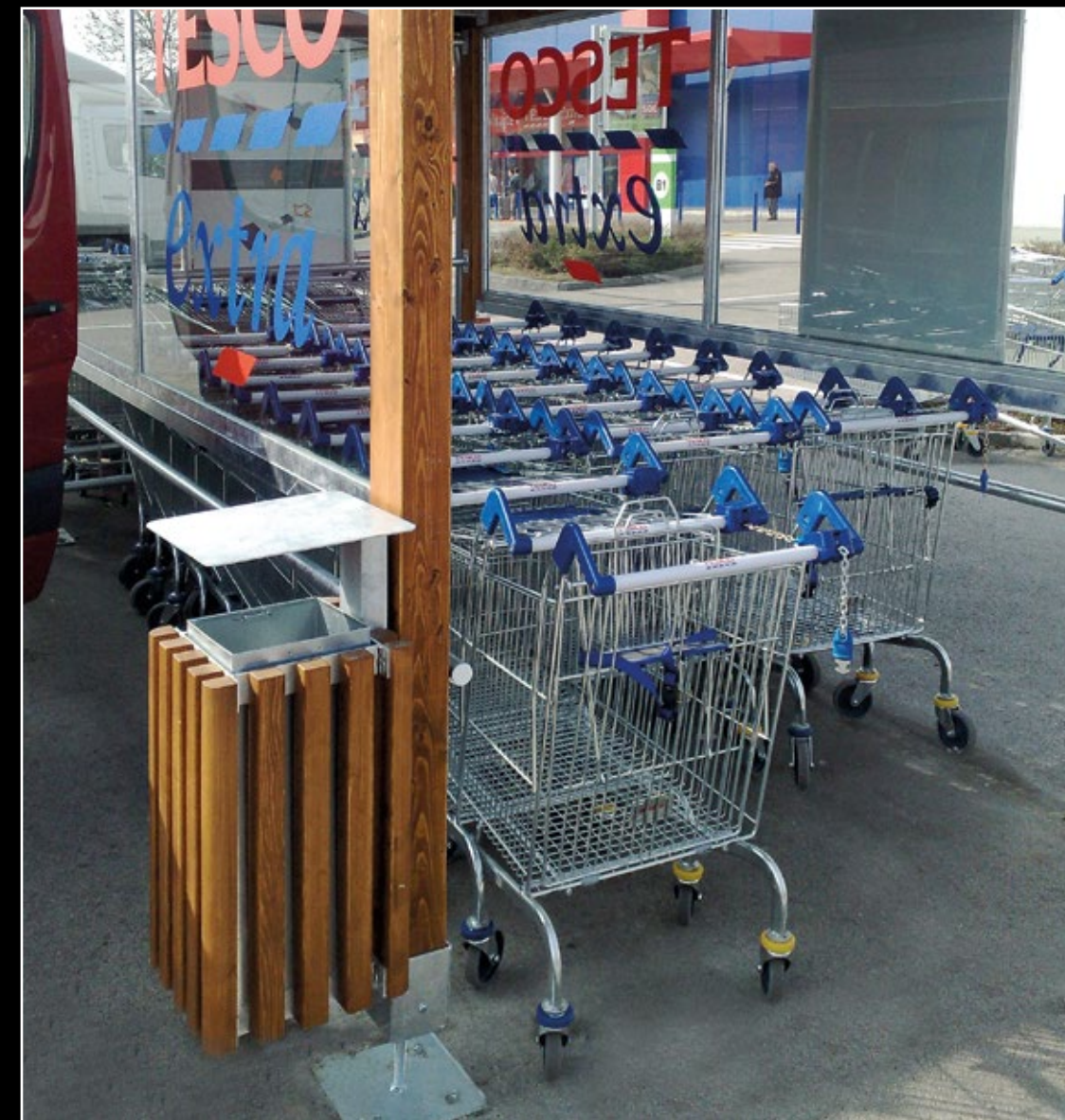
code number	support structure 80x80 mm	type		surface		trolley guiding rail	inner impact protection	side wall		outer impact protection
		one-sided double	two-sided double	fire-galvanisation	6 basic RAL colours available			6 mm tempered glass	polycarbonate	
10.07.472327.81	✓	✓	—	✓	—	✓	✓	*	*	*
10.07.472327.98	✓	✓	—	✓	✓	✓	✓	*	*	*
10.08.472327.81	✓	—	✓	✓	—	✓	✓	*	*	*
10.08.472327.98	✓	—	✓	✓	✓	✓	✓	*	*	*

\* Options



# GALLERY

## TROLLEY SHELTER WITH SPECIFIC HIGHLIGHTING







The framework structure of the beam-frame trolley shelter is made of 80 x 80 mm hot dep galvanized steel hollow sections, which ensure stability and durability. It has a levelling base structure to eliminate ground unevenness. Its area is 4.1 x 2.2 x 2.4 m. Its 3-row capacity is subject to the trolley type. It is 3 x 14 = 42 pcs. for 125 L shopping trolleys and 3 x 12 = 36 pcs. for 210 L shopping trolleys. The roof structure is slightly inclined and is covered with trapezoidal sheets. The standard features include inside impact protection and the trolley rail.

Further options: A zone plate system can be installed onto the roof structure in order to facilitate orientation. It is possible to cover the side walls or the starting side with 6 mm tempered glass sheets or air chamber polycarbonate boards, even at a later stage. Outer impact protection against damage.



The framework structure of the framed trolley shelter is made of 80 x 80 mm hot dep galvanized steel hollow sections. It has a levelling base structure to eliminate ground unevenness. Its area is 5.2 x 2.2 x 2.5 m. Its 3-row capacity is subject to the trolley type. It is 4 x 18 = 72 pcs. for 125 L shopping trolleys and 3 x 16 = 48 pcs. for 210 L shopping trolleys. The roof structure is slightly inclined and is covered with trapezoidal sheets. The footing is covered with trapezoidal sheets. The standard features include inside impact protection and the trolley rail.

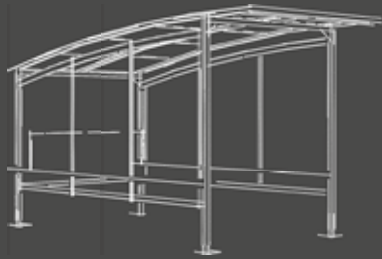
Further options: Framed highlighting of the entrance part determining the image. lightweight (60 x 60) framework structure. Reinforced framework structure (100 x 100 or 120 x 120) for extreme weather. It is possible to cover the side walls or the starting side with 6 mm tempered glass sheets or air chamber polycarbonate boards, even at a later stage. With surface powder coating in RAL colours, one can create an image matching the environment. Outer impact protection against damage.



The standard framework structure of the curved roof trolley shelter is made of 80 x 80 mm hot dep galvanized steel hollow sections. It has a levelling base structure to eliminate ground unevenness. Its area is 3 x 2.2 x 2.6 m. Its 3-row capacity is subject to the trolley type. It is 3 x 10 = 30 pcs. for 125 L shopping trolleys and 3 x 8 = 24 pcs. for 210 L shopping trolleys. The roof structure is curved, hence rainwater can be drained only behind the shelter. It is covered with 10 mm thick UV-protection air hamber polycarbonate sheets. The standard features include inside impact protection and the trolley rail.

Further options: A zone plate system can be installed onto the roof structure in order to facilitate orientation. It is possible to cover the side walls or the starting side with 6 mm tempered glass sheets or air chamber polycarbonate boards, even at a later stage. Outer impact protection against damage.

one-sided single trolley shelter



outer impact protection\*



zone table\*

In custom colour, if required.\*

Anchoring technique: to concrete, viacolor, bitumen or concrete blocks.

**1021** Kode (98)  
Yellow



**3020** Kode (98)  
Traffic red



**7016** Kode (98)  
Anthracite grey



**2004** Kode (98)  
Pure orange



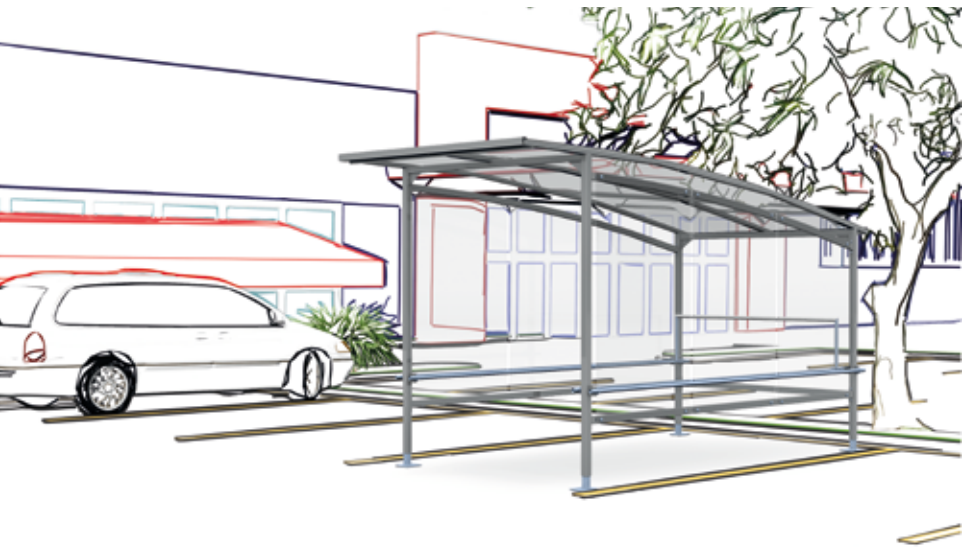
**5010** Kode (98)  
Gentian blue



**9007** Kode (98)  
Grey aluminium



## SINGLE TROLLEY SHELTER WITH CURVED ROOF



code number	support structure 80x80 mm	type	surface		trolley guiding rail	inner impact protection	side wall		outer impact protection	zone table
		one-sided single	fire-galvanisation	6 basic RAL colours available			6 mm tempered glass	polycarbonate		
10.09.302226.81	✓	✓	✓	—	✓	✓	*	*	*	*
10.09.302226.98	✓	✓	✓	✓	✓	✓	*	*	*	*

\* Options

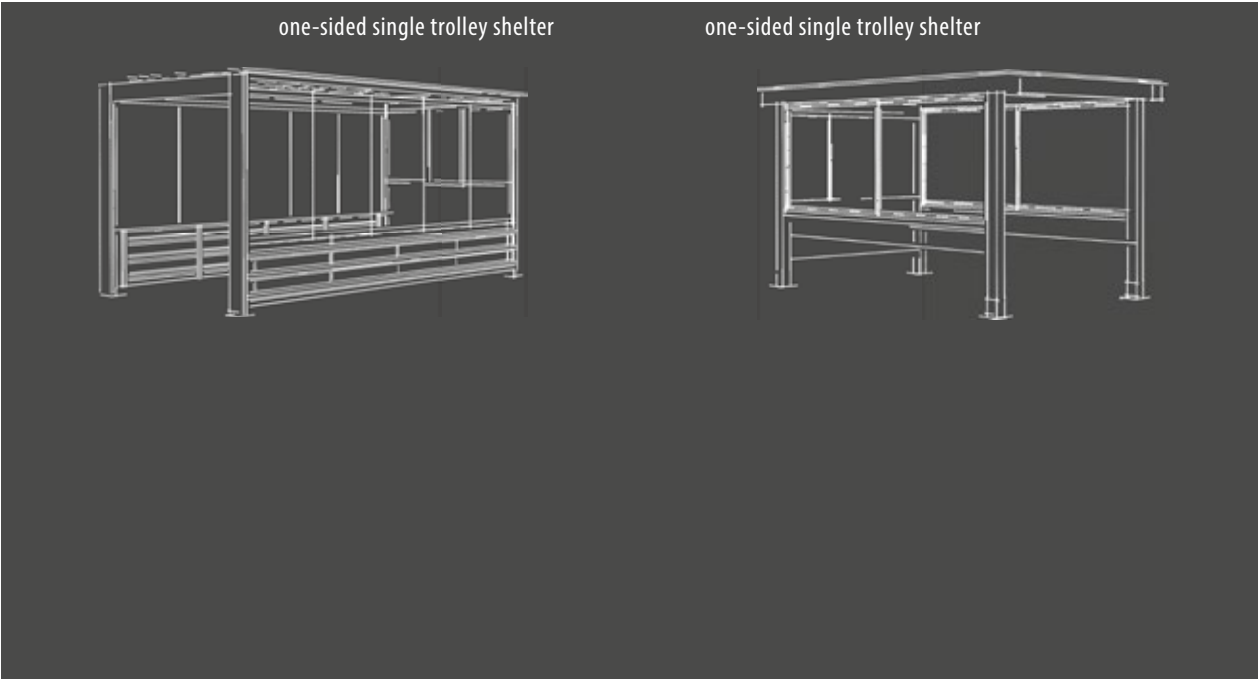


TROLLEY SHELTER WITH FRAME HIGHLIGHTING



code number	support structure 80x80 mm	type	surface		trolley guiding rail	inner impact protection	frame highlighting	side wall		outer impact protection
		one-sided single	fire-galvanisation	6 basic RAL colours available				6 mm tempered glass	polycarbonate	
10.10.522225.81	✓	✓	✓	—	✓	✓	*	*	*	*
10.10.522225.98	✓	✓	✓	✓	✓	✓	*	*	*	*

\* Options



frame highlighting\*



information board\*  
In custom colour, if required.\*  
Anchoring technique: to concrete, viacolor, bitumen or concrete blocks.

decoration\*

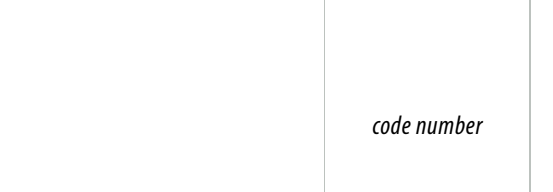


zone table\*



company logo\*  
In custom colour, if required.\*  
Anchoring technique: to concrete, viacolor, bitumen or concrete blocks.

information board\*



- 1021 Kode (98)  
Yellow
- 3020 Kode (98)  
Traffic red
- 7016 Kode (98)  
Anthracite grey
- 2004 Kode (98)  
Pure orange
- 5010 Kode (98)  
Gentian blue
- 9007 Kode (98)  
Grey aluminium

TROLLEY SHELTER WITH WOODEN BEAM FRAME



code number	support structure 80x80 mm	type	surface		trolley guiding rail	inner impact protection	side wall		outer impact protection	zone table
		one-sided single	fire-galvanisation	6 basic RAL colours available			6 mm tempered glass	polycarbonate		
10.11.412224.81	✓	✓	✓	—	✓	✓	*	*	*	*
10.11.412224.98	✓	✓	✓	✓	✓	✓	*	*	*	*

\* Options



# GALLERY

*BUS STOP, BICYCLE RACK, SMOKING PAVILION*





The framework structure of the standard bicycle racks is made of 80 x 80 mm hot dep galvanized steel hollow sections. It has a levelling base structure to eliminate ground unevenness. Its area is 4.2 x 2.2 x 2.7 m. The roof structure is triangular or bent and is covered with 10 mm thick UV-protection air hamber polycarbonate sheets. The standard features include inside impact protection.

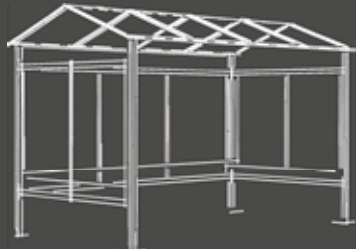
Further options: lightweight (60 x 60) framework structure. Reinforced framework structure (100 x 100 or 120 x 120) for extreme weather. It is possible to cover the side walls or the starting side with 6 mm tempered glass sheets or air chamber polycarbonate boards, even at a later stage. The front roof board can be used for decoration or information. With surface powder coating in RAL colours, one can create an image matching the environment. Outer impact protection against damage.

The framework structure of the standard bicycle racks is made of 80 x 80 mm hot dep galvanized steel hollow sections. It has a levelling base structure to eliminate ground unevenness. Its area is 4.2 x 2.2 x 2.7 m. The roof structure is triangular or bent and is covered with 10 mm thick UV-protection air hamber polycarbonate sheets.

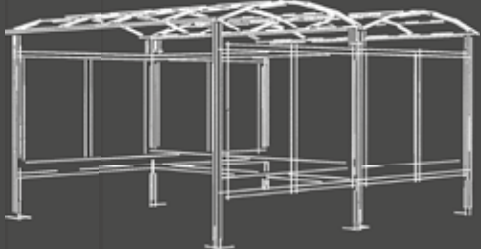
Further options: Information or advertisement boxes can be mounted onto the side walls. Lightweight (60 x 60) framework structure. Reinforced framework structure (100 x 100 or 120 x 120) for extreme weather. It is possible to cover the side walls or the starting side with 6 mm tempered glass sheets or air chamber polycarbonate boards, even at a later stage. The front roof board can be used for decoration or information. With surface powder coating in RAL colours, one can create an image matching the environment. Outer impact protection against damage.



single-side bicycle rack



double-side bicycle rack



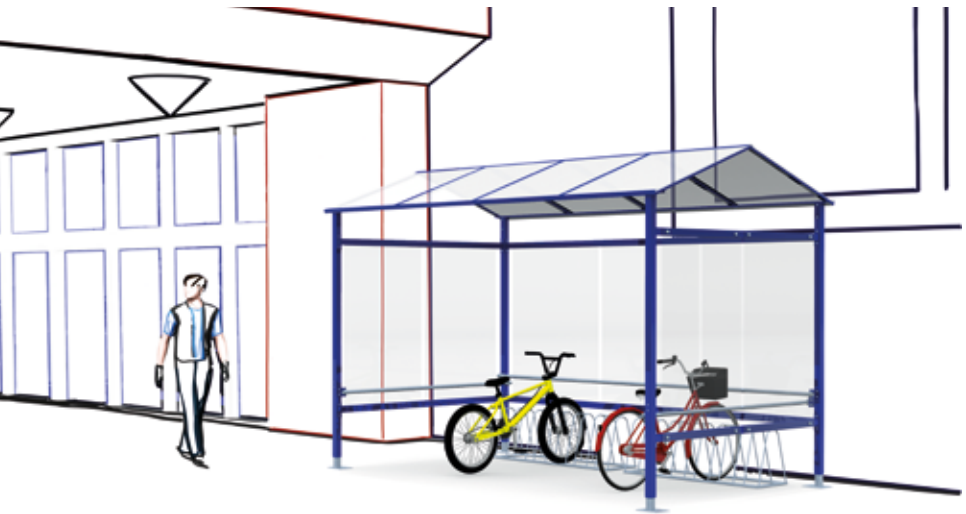
sheeted roof front\*



film-decorated, inscribed roof front\*  
In custom colour, if required.\*  
Anchoring technique: to concrete, viacolor, bitumen or concrete blocks.

<b>1021</b> Kode (98) Yellow	
<b>3020</b> Kode (98) Traffic red	
<b>7016</b> Kode (98) Anthracite grey	
<b>2004</b> Kode (98) Pure orange	
<b>5010</b> Kode (98) Gentian blue	
<b>9007</b> Kode (98) Grey aluminium	

## BICYCLE RACK

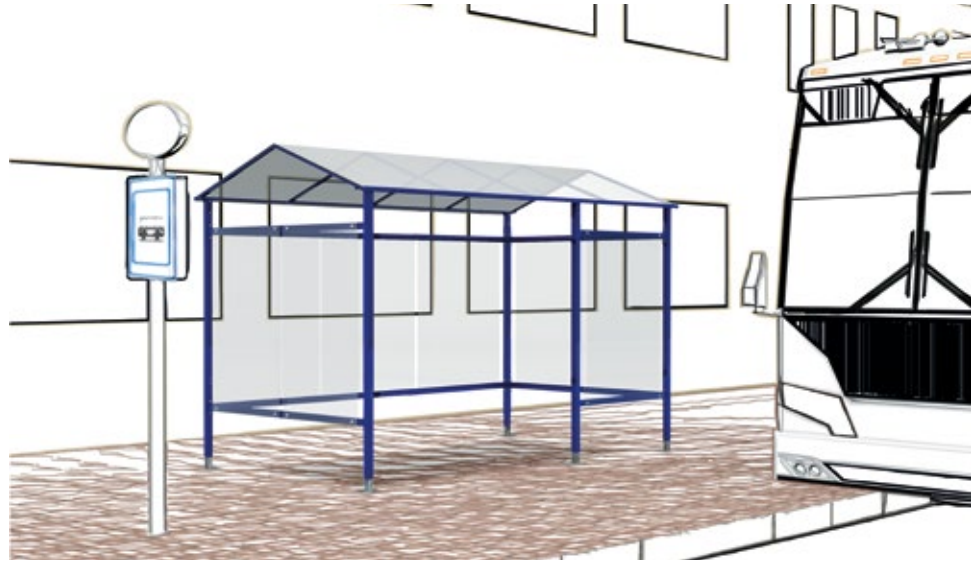


code number	support structure 80x80 mm	type		surface		inner impact protection	decoration	side wall		outer impact protection
		one-sided with triangle roof	one-sided with curved roof	fire-galvanisation	6 basic RAL colours available			6 mm tempered glass	polycarbonate	
10.12.402227.81	✓	✓	—	✓	—	✓	*	*	*	*
10.12.402227.98	✓	✓	—	✓	✓	✓	*	*	*	*
10.13.402227.81	✓	—	✓	✓	—	✓	*	*	*	*
10.13.402227.98	✓	—	✓	✓	✓	✓	*	*	*	*

\* Options

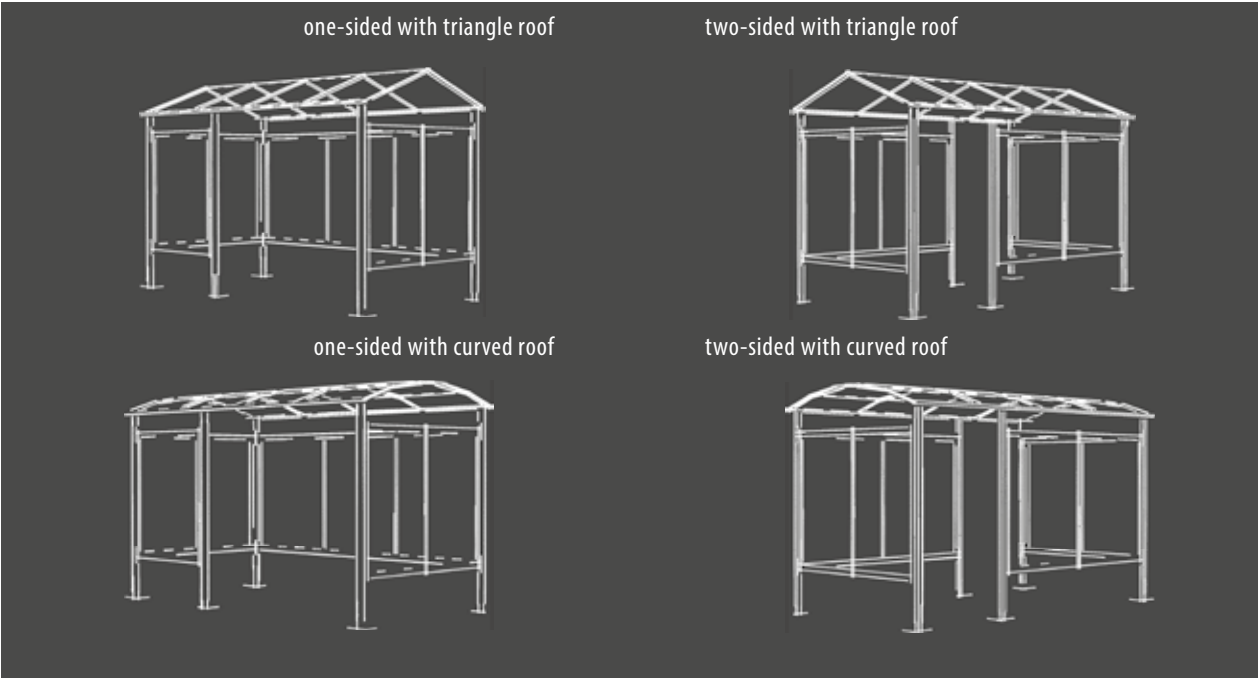


BUS STOP, SMOKING PAVILION



code number	support structure 80x80 mm	type		surface		adjustable bottom structure	decoration	side wall		outer impact protection
		one-sided with triangle roof	one-sided with curved roof	fire-galvanisation	6 basic RAL colours available			6 mm tempered glass	polycarbonate	
10.14.402227.81	✓	✓	—	✓	—	✓	*	*	*	*
10.14.402227.98	✓	✓	—	✓	✓	✓	*	*	*	*
10.15.402227.81	✓	—	✓	✓	—	✓	*	*	*	*
10.15.402227.98	✓	—	✓	✓	✓	✓	*	*	*	*

\* Options



decoration\*



information board\*  
In custom colour, if required.\*

Anchoring technique: to concrete, viacolor, bitumen or concrete blocks.

outer impact protection\*



company logo\*

In custom colour, if required.\*

Anchoring technique: to concrete, viacolor, bitumen or concrete blocks.

**1021** Kode (98)  
Yellow



**3020** Kode (98)  
Traffic red



**7016** Kode (98)  
Anthracite grey



**2004** Kode (98)  
Pure orange



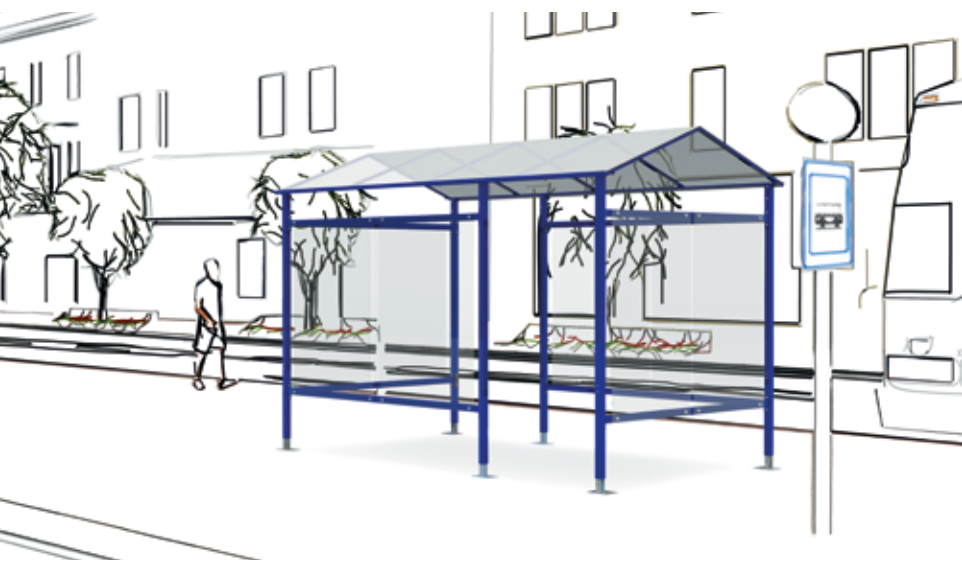
**5010** Kode (98)  
Gentian blue



**9007** Kode (98)  
Grey aluminium



BUS STOP, SMOKING PAVILION



code number	support structure 80x80 mm	type		surface		adjustable bottom structure	decoration	side wall		outer impact protection
		two-sided with triangle roof	two-sided with curved roof	fire-galvanisation	6 basic RAL colours available			6 mm tempered glass	polycarbonate	
10.16.402227.81	✓	✓	—	✓	—	✓	*	*	*	*
10.16.402227.98	✓	✓	—	✓	✓	✓	*	*	*	*
10.17.402227.81	✓	—	✓	✓	—	✓	*	*	*	*
10.17.402227.98	✓	—	✓	✓	✓	✓	*	*	*	*

\* Options



# GALLERY

UNIQUE OUTDOOR EQUIPMENT



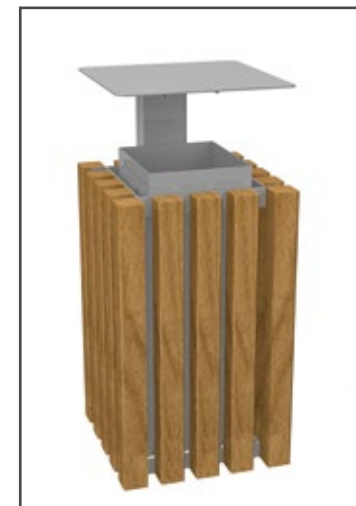
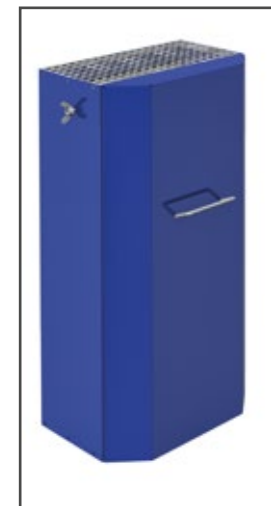
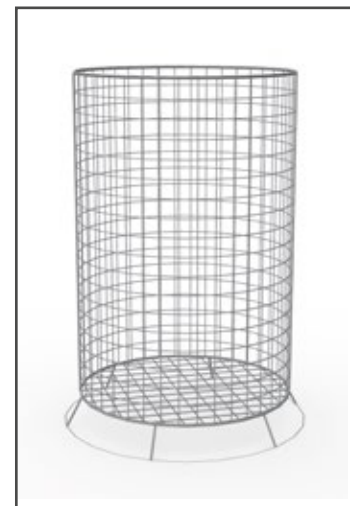
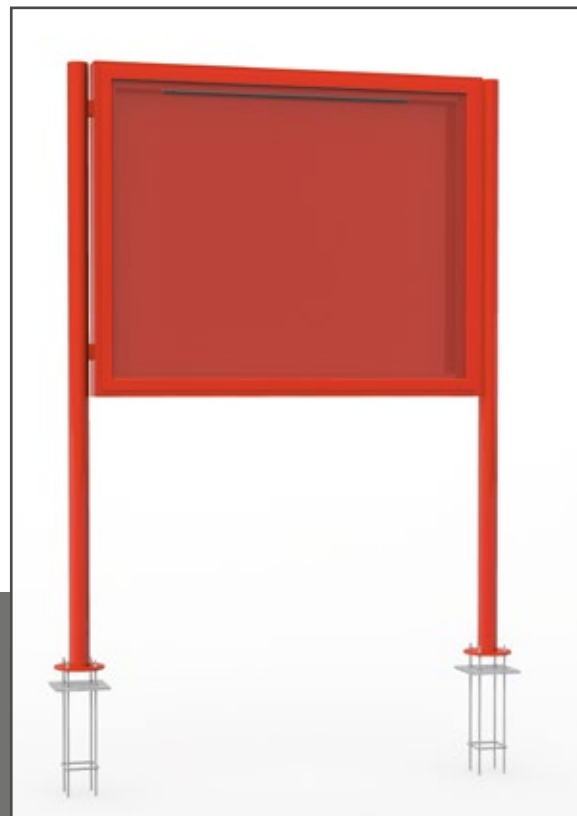
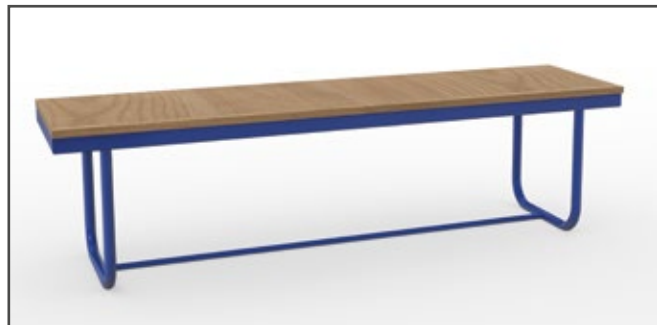
*If it comes to unique storage facilities, bus stops, smoking pavilions, our experts can offer durable and image-fitting solutions. Unlike in the case of standard storage equipment, we can install stainless steel framework structures and accessories as well.*





Every storage equipment is of modular design. Many of them use the same or compatible parts, which enable variability. There is practically an unlimited number of configurations.

The optional accessories can be used to create a comfortable and organised environment. Durability is ensured by excellent quality base materials and lasting surface treatment.



Modular bicycle racks. A cost-effective bicycle storage solution in addition to covered racks or independently. Excellent quality steel frame structure, weatherproof design. Fitted with anchoring points.

The benches are ideal accessories for smoking pavilions and bus stops, both indoors and outdoors. Steel frame structure, optional RAL colour, solid wood seat. With or without backrest. Fitted with anchoring points.

Waste containers. Wall or ground-mounted design. Selective waste container. 3 compartment (communal, paper, plastic) hot dip galvanized or stainless steel design.

Aluminium advertisement box made of curved frame profile and with a single-leaf opening on one side and made with a galvanised rear panel, tempered glass inside the leaf, gas strut, steel pipe leg. If required, it can have opaque plexiglass light deflection, laminated logo, internal lighting, powder coated surface in optional RAL colour. The structure opens with a special key.

## OPTIONAL ACCESSORIES

## OPTIONAL ACCESSORIES



**ROTTE** *Group*

E-MAIL: [rotte@rottegroup.eu](mailto:rotte@rottegroup.eu)  
<http://www.rottegroup.eu>

